



## EASILY CREATE YOUR UNIQUE SKU NUMBER

The (Stock Keeping Unit) SKU Configurator can be used to determine the composition of the SKU (Item) number. Selection of some characters from the item's category, subcategory, vendor's part number, manufacturer or vendor will add them to the SKU number's format. Users can instead choose that an auto-generated number becomes part of the SKU.

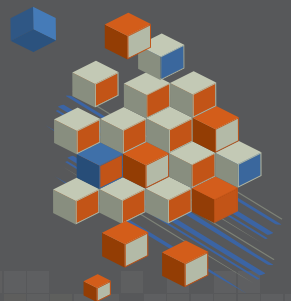
In addition, the ability exists of designating how many items have been created under a category and assign that particular item an incremented number anywhere within the SKU configuration.

If required SIMMS has a manual SKU override where you can manually assign an item your own item code outside of the SKU generation automation.

### WHAT SIMMS CAN DO FOR YOUR BUSINESS

- Simply configure and create unique (Item) SKU numbers
- Facilitate advanced inventory management
- Standardize your item numbers giving them meaning in the structure for a better understanding of your item numbering

**Flawless standard uniform SKU numbering**



Element	Calculation Method	No. of Characters	Extra Characters
Part 1 Vendor	Automatically Generated #	5	0
Part 2 Vendor's Part Number	Automatically Generated #	5	0
Part 3 Category	Automatically Generated #	2	0
Part 4 Manufacturer	Automatically Generated #	5	0
Part 5	Automatically Generated #	2	0
Part 6	Automatically Generated #	2	0
Part 7	Automatically Generated #	2	0
Part 8	Automatically Generated #	2	0

SKU is 10 characters long

## SKU MODULE FEATURES

SIMMS has the capability to assign a particular SKU item number to each inventory item configured in the Inventory Manager, enabling users to automatically assign a particular product's item number based on an SKU formula that can be devised using the SKU Configurator.

This can be done upon the creation of an item, with the result that once the selection of either the item category, subcategory, brand (sub-sub category), model (sub-sub-sub category) or manufacturer has been made and the Save button has been clicked, the Item code SKU will be automatically created based on the selected options.

### Examples of the available SKU choices listed are as follows:

- the first two characters of a category
- a 5-character item incremented number
- the first three characters of a subcategory
- the first four characters of a manufacturer
- A 4-character automatically-generated number for a vendor
- A specific example of an SKU could thus be as follows:

the category of a computer: SU (for SUPER COMPUTERS)

the 40th item configured under the category: 00040

the sub-category: FAN (for FANS)

the manufacturer: PHILL (for PHILLIPS)

the vendor: Ingram Micro (with an automatically generated code of 0009)

Subsequently, the resultant SKU would be SU00040FANPHILL0009.

## SUPPORT SERVICES

World-class support is one of the principal reasons that KCSI is a leader in the Inventory Management arena.

### Training

KCSI offers a wide range of options. We offer on-site or online training and implementation expertise.

### Support

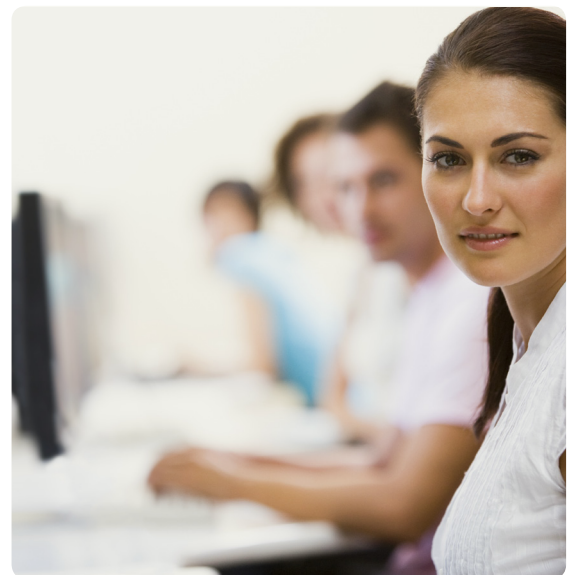
There are several support plans to choose from, empowering you to pick the plan that works for your company.

### Upgrades

Upgrades for SIMMS as they are released. With an active support plan you will always have the latest, most current version of SIMMS.

### Pre-paid Support

Purchase a block of support service time to ensure the smooth operation of your system on an ongoing basis.



T: 1-866-888-KCSI / 1-604-504-4215

Unit# 201 31234 Wheel Ave, Abbotsford, BC V2T 6G9 Canada

<http://www.kornyk.com> | [sales@kcsi.ca](mailto:sales@kcsi.ca)